

THE CERAMIC FLUE SYSTEM



GRUPPO
CFFE 2
S.p.A.

CERAMIC FLUES & INTELLIGENT BUILDING SOLUTIONS

CERAMIC FLUES & INTELLIGENT BUILDING SOLUTIONS



Gruppo EFFE2 S.p.A. has been a European leader in the production of clay ceramic chimney flues and intelligent building solutions for over 50 years.



Quality, safety, innovation, flexibility and complete customer satisfaction are the fundamental principles of our company mission.

Particular attention is paid to the relations and service with all our customers, from the first contact during technical consultancy, the choice of the right product, the best conditions of supply, up to any building site and after-sales service.



The company is located in Isola Vicentina (Vicenza), in Northern Italy, and is thus an integral part of the historical ceramic district. The business activity is carried out over an industrial area of 216,000 m²: technologically advanced equipment and a constant strive for improvement guarantee products with an absolute quality level which is highly valued on all major markets worldwide.



The quality and safety of the products are guaranteed by the company's compliance with **CE** regulations and its **ISO9001**-certified company quality system.





**THE SECTIONAL
SYSTEM THAT
WILL CHANGE
YOUR MIND
ABOUT CHIMNEY
FLUES**



CONTENTS

DOMUS CHIMNEY FLUES

Page 6

ULTRA CHIMNEY FLUES

Page 8

ULTRA DUPLEX CHIMNEY FLUES

Page 10

APPLICATIONS GUIDE

Page 12

UNIVERSAL

Page 14

THERMOKERB

Page 15



EFFE2 chimney pot



Linear block



EFFE2 Sealant Kit



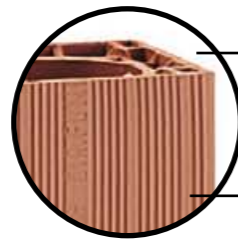
Connection block with hole



Block with inspection door



Condensation collection plate



Double-walled module

Can be plastered immediately

**40-YEAR
GUARANTEE**

T600-N1-D-3-G100
Maximum soot-fire resistance

MAIN DIMENSIONS

| Section | Code | Inner dimensions (cm) | Outer dimensions (cm) | Useful surface (cm ²) | Unit weight (kg) | Pallet weight (kg) | Pieces/pallet |
|-------------|-------|-----------------------|-----------------------|-----------------------------------|------------------|--------------------|---------------|
| CIRCULAR | 00/02 | Ø 14 | 20 x 20 | 153 | 13,1 | 655 | 50 |
| | 00/03 | Ø 17 | 23 x 23 | 226 | 17,1 | 684 | 40 |
| | 00/04 | Ø 19 | 26 x 26 | 283 | 20,5 | 656 | 32 |
| | 00/05 | Ø 22 | 30 x 30 | 380 | 24,0 | 576 | 24 |
| OVAL | 01/04 | 17 x 42 | 25 x 50 | 650 | 35,0 | 560 | 16 |
| RECTANGULAR | 02/06 | 20 x 30 | 29 x 39 | 600 | 30,5 | 549 | 18 |
| | 02/08 | 25 x 40 | 35 x 50 | 1000 | 46,0 | 552 | 12 |
| CIRCULAR | 00/06 | Ø 25 | 35 x 35 | 550 | 7,7 | 278 | 36 |
| | 00/07 | Ø 30 | 40 x 40 | 800 | 9,8 | 351 | 36 |
| OVAL | 01/06 | 30 x 40 | 42 x 52 | 1100 | 12,2 | 661 | 54 |
| RECTANGULAR | 02/04 | 20 x 20 | 29 x 29 | 400 | 5,8 | 634 | 108 |
| | 02/07 | 20 x 40 | 30 x 50 | 800 | 8,8 | 475 | 54 |

Single block length: cm 50

Single block length: cm 33

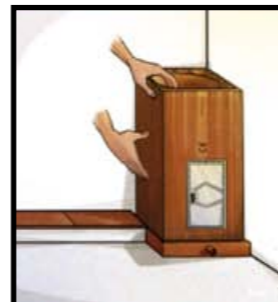
INSTALLATION PROCEDURE



1 Prepare the base (condensation collection plate).



2 Clean the male-female joint.



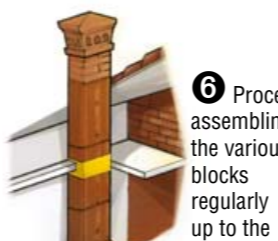
3 Position the blocks to be engaged after having applied the sealant.



4 Manually clean any leakage of the sealant inside the chimney flue.



5 When crossing the floor, keep the chimney flue disengaged with fire-proof material.



6 Proceed assembling the various blocks regularly up to the necessary height.

SOOT-FIRE RESISTANT

The **DOMUS** chimney flues are extremely resistant to high temperatures and have the best soot-fire resistance with FB1 N1 classification.

40-YEAR GUARANTEE

Thanks to their excellent heat resistance and natural insensitivity to corrosion, the **DOMUS** chimney flues are characterized by their outstanding durability.

NO TUBING REQUIRED!

The **DOMUS** blocks are tested and certified as chimney flues: no additional tubing is required.

QUICK AND EASY ASSEMBLY

Thanks to the self-supporting modular system with male-female joints, the reduced weight and particularly compact dimensions of the blocks as well as the simplicity of installation, **DOMUS** chimney flues can be assembled 4 times faster than other systems.

TECHNICAL SERVICE

Gruppo EFFE2 S.p.A. assists builders, architects and heat engineers with the sizing and proper composition of the chimney flues to be installed.



REF. REGULATIONS: EN 1443 – EN 1806 - **CE**

CHIMNEY FLUE ULTRA

FOR LIQUID- OR GAS-FUEL BOILERS

SAFE - EASY - ECONOMICAL



EFFE2 chimney pot



Linear block



EFFE2 silicone



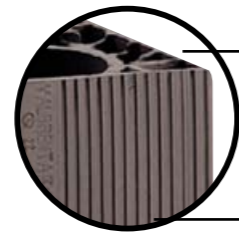
Connection block with hole



Block with inspection door



Condensation collection plate



Double-walled module

Can be plastered immediately

**40-YEAR
GUARANTEE**

T300-N1-D&W-3-0
T200-P1-D&W-3-0

Best classification for the resistance to acid condensation

MAIN DIMENSIONS

| Code | Inner dimensions (cm) | Outer dimensions (cm) | Useful surface (cm ²) | Unit weight (kg) | Pallet weight (kg) | Pieces/pallet |
|-------|-----------------------|-----------------------|-----------------------------------|------------------|--------------------|---------------|
| 05/01 | Ø 12 | 18,5 x 18,5 | 113 | 12 | 720 | 60 |
| 05/02 | Ø 14 | 20 x 20 | 153 | 13,1 | 655 | 50 |
| 05/03 | Ø 17 | 23 x 23 | 226 | 17,1 | 684 | 40 |
| 05/04 | Ø 19 | 26 x 26 | 283 | 20,5 | 656 | 32 |
| 05/05 | Ø 22 | 30 x 30 | 380 | 24 | 576 | 24 |
| 05/06 | Ø 25 | 35 x 35 | 550 | 36 | 648 | 18 |

Single block length: cm 50

INSTALLATION PROCEDURE



1 Prepare the base (condensation collection plate).



2 Clean the male-female joint.



3 Position the blocks to be engaged after having applied the silicone.



4 When crossing the floor, keep the chimney flue disengaged with fire-proof material.



5 Proceed assembling the various blocks regularly up to the necessary height.

Suitable for:
"TYPE C" AND CONDENSING BOILERS
"TYPE B" BOILERS WITH SINGLE CONNECTION

IMPERMEABLE AND RESISTANT TO ACIDS

The **ULTRA** chimney flues are highly impermeable and distinguished for their maximum resistance to acid condensation with classification FB4 N1 and FB5 P1.

40-YEAR GUARANTEE

Thanks to their natural insensitivity to corrosion, the **ULTRA** chimney flues are characterized by their outstanding durability.

NO TUBING REQUIRED!

The **ULTRA** blocks are tested and certified as chimney flues: no additional tubing is required.

QUICK AND EASY ASSEMBLY

Thanks to the self-supporting modular system with male-female joints, the reduced weight and particularly compact dimensions of the blocks as well as the simplicity of installation, **ULTRA** chimney flues can be assembled 4 times faster than other systems.

TECHNICAL SERVICE

Gruppo EFFE2 S.p.A. assists builders, architects and heat engineers with the sizing and proper composition of the chimney flues to be installed.



REF. REGULATIONS: EN 1443 – EN 1806 - CE

Suitable for:
“TYPE B” BOILERS WITH MULTIPLE CONNECTION
“TURBO” BOILERS

IMPERMEABLE AND RESISTANT TO ACIDS

The **ULTRA DUPLEX** chimney flues are highly impermeable and distinguished for their maximum resistance to acid condensation with classification FB4 N1 and FB5 P1.

40-YEAR GUARANTEE

Thanks to their natural insensitivity to corrosion, the **ULTRA DUPLEX** chimney flues are characterized by their outstanding durability.

NO TUBING REQUIRED!

The **ULTRA DUPLEX** blocks are tested and certified as chimney flues: no additional tubing is required.

QUICK AND EASY ASSEMBLY

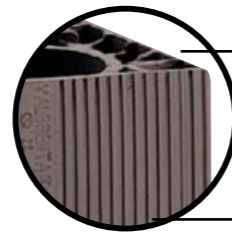
Thanks to the self-supporting modular system with male-female joints, the reduced weight and particularly compact dimensions of the blocks as well as the simplicity of installation, **ULTRA DUPLEX** chimney flues can be assembled 4 times faster than other systems.

TECHNICAL SERVICE

Gruppo EFFE2 S.p.A. assists builders, architects and heat engineers with the sizing and proper composition of the chimney flues to be installed.



REF. REGULATIONS: EN 1443 – EN 1806 -



Double-walled module

Can be plastered immediately

40-YEAR GUARANTEE

T300-N1-D&W-3-0
T200-P1-D&W-3-0

Best classification for the resistance to acid condensation

MAIN DIMENSIONS

| Code | Inner dimensions (cm) | Outer dimensions (cm) | Useful surface (cm ²) | Unit weight (kg) | Pallet weight (kg) | Pieces/pallet |
|-------|----------------------------|-----------------------|-----------------------------------|------------------|--------------------|---------------|
| 04/04 | 17 x 12 17 x 18 | 24 x 40 | 198/301 | 28,6 | 686 | 24 |
| 04/05 | 14,2 x 14,5 14,2 x 20,3 | 21 x 45 | 207/290 | 28,5 | 570 | 20 |
| 04/06 | 17,6 x 14,5 17,6 x 25,3 | 25 x 51 | 256/445 | 34,0 | 544 | 16 |
| 04/07 | 22 x 16,58 22 x 21,5 | 30 x 50 | 364/475 | 41,0 | 492 | 12 |

Single block length: cm 50

INSTALLATION PROCEDURE



1 Prepare the base (condensation collection plate).



2 Clean the male-female joint.



3 Position the blocks to be engaged after having applied the silicone.



4 When crossing the floor, keep the chimney flue disengaged with fire-proof material.



5 Proceed assembling the various blocks regularly up to the necessary height.



EFFE2 chimney pot



Linear block



EFFE2 silicone



Connection block with hole



Block with inspection door



Condensation collection plate



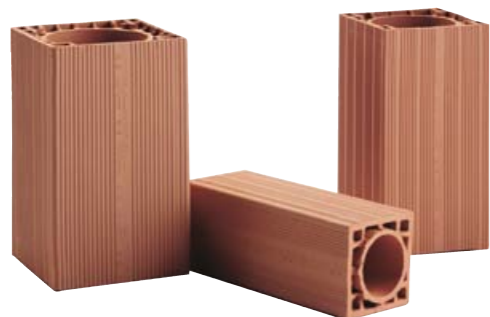


CHIMNEY FLUE APPLICATIONS GUIDE



FIREPLACES & STOVES

(multiple connection not allowed!)

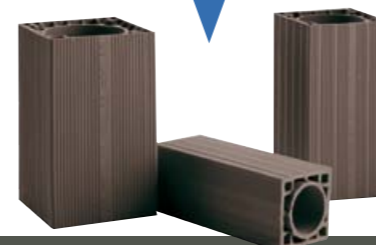


DOMUS



TYPE A RANGE HOODS

SINGLE CONNECTION



ULTRA

MULTIPLE CONNECTION



ULTRA DUPLEX



TYPE B BOILERS

OPEN-FLUE

SINGLE CONNECTION



ULTRA

MULTIPLE CONNECTION



ULTRA DUPLEX

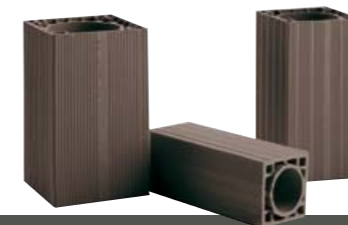


TYPE C BOILERS

SEALED-CHAMBER
STANDARD, CONDENSING
& TURBO

STANDARD & CONDENSING

SINGLE CONNECTION
MULTIPLE CONNECTION



ULTRA

TURBO

SINGLE CONNECTION
MULTIPLE CONNECTION



ULTRA DUPLEX

UNIVERSAL

MULTIFUNCTIONAL
BRICK BLOCK

THERMOKERB



EXTREME VERSATILITY

QUICK AND EASY ASSEMBLY

SAFE AND ECONOMICAL



| Code | Inner dimensions (cm) | Outer dimensions (cm) | Length (cm) | Unit weight (kg/m) | Quantity per pallet (m) |
|-------|-----------------------|-----------------------|-------------|--------------------|-------------------------|
| 03/00 | 13 x 13 | 15 x 15 | 50 | 17 | 36 |
| 03/01 | 19 x 20 | 26 x 27 | 50 | 53 | 16 |
| 03/04 | 25 x 25 | 31 x 31 | 50 | 60 | 12 |
| 03/05 | 30 x 30 | 37 x 37 | 50 | 78 | 12 |

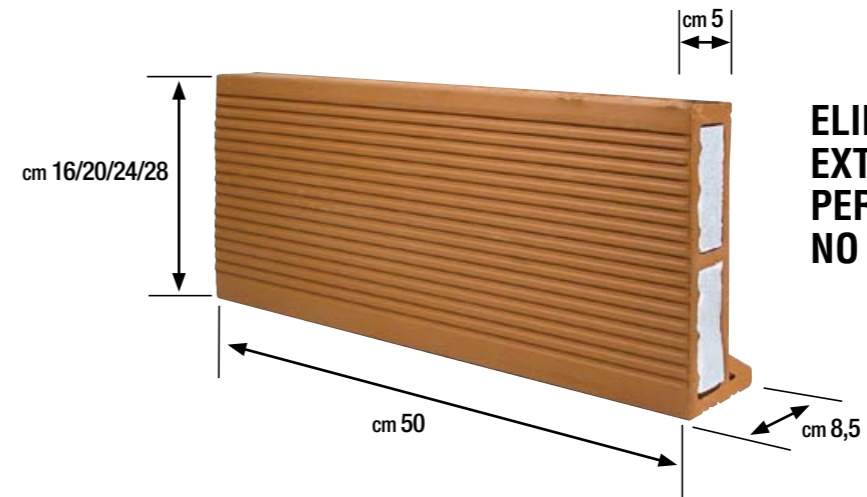


REF. REGULATION: EN 13069 -

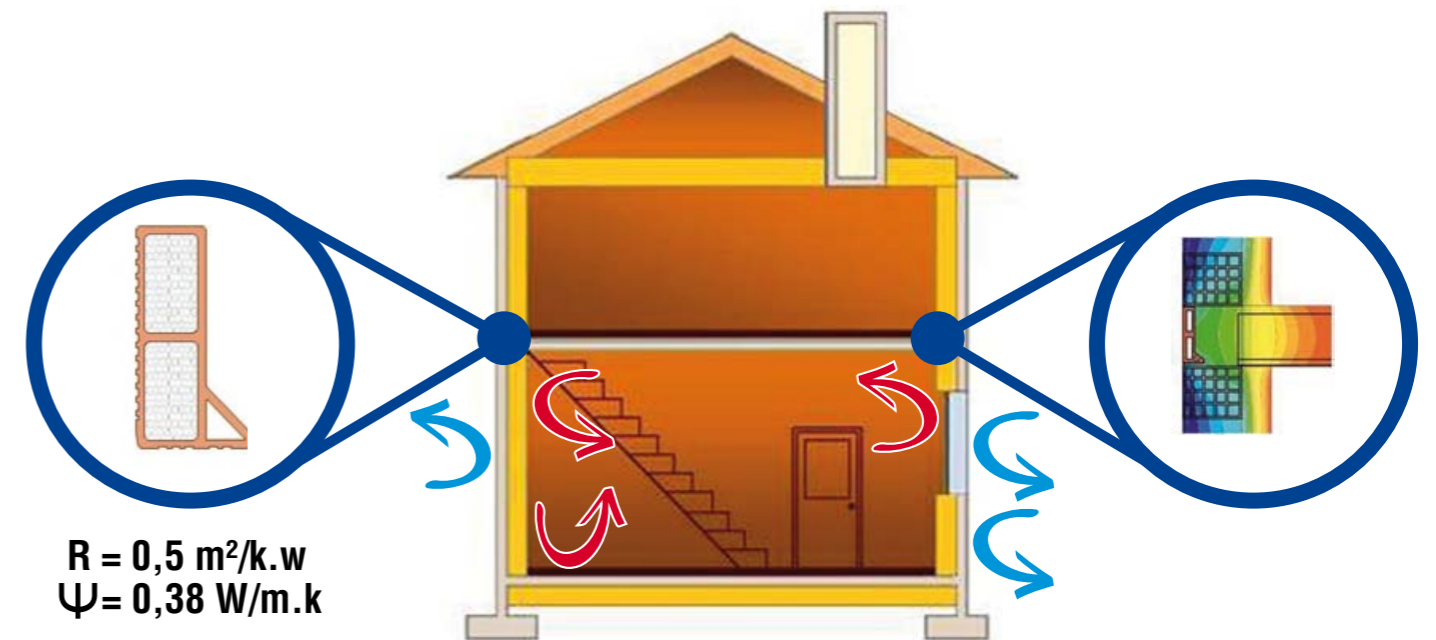
MAXIMUM THERMAL INSULATION

ENERGY SAVINGS

QUICK AND EASY ASSEMBLY



ELIMINATES THE THERMAL BRIDGE
EXTREME FLEXIBILITY
PERFECT INTEGRATION INTO THE WALL
NO AESTHETIC IMPACT



$R = 0,5 \text{ m}^2/\text{k.w}$
 $\Psi = 0,38 \text{ W/m.k}$

| Code | Description | Dimensions (cm) | Unit weight (kg/m) | Quantity per pallet (m) |
|-------|-------------------|-----------------|--------------------|-------------------------|
| 77/00 | Thermokerb h. 160 | 16 x 50 | 7,5 | 84 |
| 77/02 | Thermokerb h. 200 | 20 x 50 | 9,1 | 70 |
| 77/03 | Thermokerb h. 240 | 24 x 50 | 10,6 | 48 |
| 77/04 | Thermokerb h. 280 | 28 x 50 | 11,8 | 36 |



THE CERAMIC FLUE SYSTEM



GRUPPO EFFE2 S.p.A.

Via Scovizze, 1 - 36033 Isola Vicentina (VI) - Italy

Tel. +39 0444.599211 - Fax +39 0444.977078

www.ffe2.com - info@ffe2.com